



HORIZON

THE PLACEMENT CELL

[NAAC ACCREDITED GRADE A++]

MAITREYI COLLEGE, UNIVERSITY OF DELHI



BROCHURE

2024-25

ACKNOWLEDGMENTS

"Gratitude is our compass, guiding us to recognize the support of our recruiters, faculty, staff, and students who make our placement cell thrive."

We are immensely thankful to our eminent Corporate Recruiters for their consistent engrossment. We are also cordially grateful to our exclusive faculty, administrative staff and our esteemed alumni for their indispensable beneficence.

At last, we whole-heartedly thank the students, whose persistence have encouraged us to work relentlessly for the betterment of the Placement Cell.

CONTENTS

- 01 About Maitreyi
- 02 Why Maitreyians
- 03 Course Structure
- 04 Batch Structure
- 05 About Horizon
- 06 Our Vision and Mission
- 07 Departments of the Cell
- 08 Recruitment Season Highlights
- 09 Envision 6.0 - Report
- 10 Past Recruiters
- 11 Initiatives by the Cell
- 12 Our Achievements
- 13 Testimonials
- 14 ILLustrious Selections
- 15 Recruitment Process
- 16 Our Team 2024-25
- 17 Talk to Us

ABOUT MAITREYI

Maitreyi College is a women's college in the South Campus of the University of Delhi, located in Bapu Dham, Chanakyapuri, New Delhi-110021, India. It was established in July 1967 and named after the Vedic sage Maitreyi.

Maitreyi College is an eminent constituent college of the University of Delhi, offering quality education to women. It offers various courses in the fields of Science, Arts and Commerce.

Among the distinguished achievements are its recognition among the top six colleges to receive Star status (for all Science departments) from the Department of Biotechnology (DBT), Government of India. Additionally, the institution attained an "A++" Grade during the NAAC Accreditation assessment. Secured a noteworthy all-India NIRF ranking of 36 as well and ranked 24 by India today.

Academic excellence is an established tradition of the college, accompanied with continuous achievements in the field of sports, extra-curricular, co-curricular and cultural activities. The college strives for a multidimensional approach towards holistic development of our fraternity (Maitreyi Kutumb). The primary areas of emphasis include promoting critical thinking and research stimulation, fostering inclusivity through community and social outreach, nurturing entrepreneurship, instilling environmental consciousness, enhancing employability and skills, encouraging interdisciplinary collaboration, and developing strategies for student enrichment and intervention to support their learning, among other objectives.



WHY MAITREYIANS?

ACADEMIC EXCELLENCE

College rigorous curriculum ,faculty expertise,and innovative teaching methods contribute to produvng well rounded and knowledgable students

DISTINGUISHED FACULTY

Renowned for its exceptional faculty, Maitreyi College boasts experienced professors who not only impart academic knowledge but also mentor students, helping them develop critical thinking and analytical skills.

INTERDISCIPLINARY APPROACH

The college emphasises interdisciplinary learning, enabling students to explore connections between different fields of study, promoting holistic understanding and adaptability.

MULTIFACETED SOCIETIES

The diverse range of student societies at Maitreyi College caters to various interests, allowing students to engage in extracurricular activities that complement their academic pursuits and develop a well-rounded skill set.

INDUSTRY LINKAGES

Maitreyi College has established strong ties with industries and organisations, facilitating internships, workshops, and guest lectures, which equips students with practical insights and makes them industry-ready.

ALUMNI NETWORK

The strong and active alumni network of Maitreyi College provides ongoing support and mentorship to current students, aiding in career guidance and professional growth.

COURSE STRUCTURE

SCIENCE

- B.Sc (H) Chemistry (Integrated)
- B.Sc (H) Botany
- B.Sc (H) Physics (Integrated)
- B.Sc (H) Zoology
- B.Sc Programme Physical Science (Chemistry/Computer Science)
- B.Sc (H) Mathematics

COMMERCE

- Bcom (P)
- Bcom (H)

ARTS

- B.A. (H) Political science
- B.A. (H) Sanskrit
- B.A. (H) Hindi
- B.A. (H) History
- B.A. (H) English
- B.A. (H) Economics
- B.A. Programme

BATCH STRUCTURE

BATCH SIZE



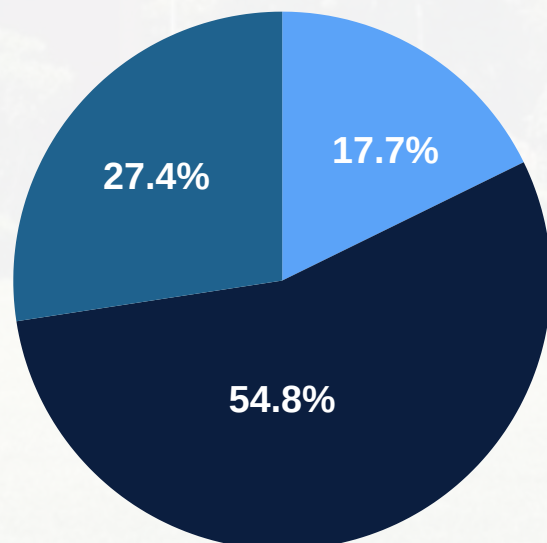
TOTAL STRENGTH -1065

ARTS
584

COMMERCE
189

SCIENCE
292

STREAM WISE BREAKUP



ABOUT HORIZON

“At Horizon, we grasp your uniqueness and celebrate your journey. Let us be your guiding light as you navigate the realms of professional success with confidence.”

Horizon, the Placement Cell of Maitreyi College is an eminent part of the legacy of this esteemed institution, dedicated to facilitating the recruitment process for both students and employers. It fills in as an extension between the academic and corporate world, ensuring that the smooth interactions and righteous placement opportunities open doors for our students. The main objective of Horizon has been to equip students with the necessary skills, knowledge, and guidance to succeed in their chosen careers and serve as an asset to the college, as well as the fields they'll represent their college in.

Horizon executes its activities to align students' capabilities with industry expectations, increasing the chances of successful placements by organising training programs, workshops, guest lectures, covering indispensable aspects such as Resume Writing, Interview Skills, Group Discussions, Personality Development etc. Horizon actively engages with leading companies and organisations- thereby justifying its robust network of recruiters.

Over the past Placement seasons, Horizon has ensured students get their coveted work profiles and companies attain the talent and skills they are on the hunt for. It also aims to nurture democratic values, freedom of expression and creativity, growth of individuals and inclusivity of diverse backgrounds. This session saw a myriad eminent companies being onboarded with Horizon- like Deloitte, Accenture, Pwc, BCG etc. offering the best job and internship opportunities to students.

Overall, the Placement Cell of our college plays a crucial role in shaping the future of its students by serving as a supportive and guiding force, ensuring that students are well-prepared, confident, and ready to excel in the competitive job market.

OUR VISION

- Igniting students' potential through vital skills
- Navigating the Employability Edge .
- Nurturing partnerships within the industry.
- Design personalised pathways to placements, steering students towards rewarding careers.
- Merging academia with Industry demands.
- Fuel holistic development through impactful internships,nurturing well-rounded individuals.

OUR MISSION

“Together, we shape successful futures”

Our mission is to bridge the gap between students and professional opportunities, facilitating seamless transitions from academia to industry. Through strategic partnerships and personalised guidance, we empower students to realise their career potential while assisting companies in identifying top talent. Our devotion lies in cultivating an understanding of the advantages that placements and corporate paths bring to the Maitreyi community, a dedication that fills us with shared

DEPARTMENTS OF THE CELL

Corporate Networking

Corporate Networking department is the solicitation of the potential companies who can offer various opportunities whether internship or jobs for our students.

Data & Communcation

Data department is an association between the students and the companies. It helps the students to simplify the complex corporate jargon & coordinate with the companies for a smooth process.

Corporate & Finance

The Corporate and Finance department handles the finances of the cell. Its focus is to bring funds to the cell. Its efficiency and productivity makes the work the entire year.

Graphics & Creatives

Graphics & Creatives Department's responsibility is to design posters and reports. Eye-catching posters are made to attract new audiences.

Event Management

From Organising events to managing logistics, the event management team is a go-getter. The team is responsible for conducting seminars, workshops and the annual internship fair.

Media & Marketing

The Media & Marketing department helps in promotion of the cell. This department caters to social media handles of the cell on various platforms.

RECRUITMENT SEASON

HIGHLIGHTS 2024-25

Esteemed firms such as EY, XALTS, Deloitte, PwC, DE Shaw, Zomato, Bajaj Capital, Lenskart, and more partnered with us for the session. In the 2023-24 session, a multitude of 250+ renowned enterprises eagerly sought interns for a plethora of distinguished roles, including Human Resource Management, Digital Marketing, Sales, Product Management, Graphic Design, and Brand Specialization. Moreover, 70+ corporations were actively scouting for full-time talent across domain such as Wealth Management, Project Management, Software Development, CRM Specialization, Quantitative Analysis, Research Associate, and Data Analysis. During the 2023-24 term, DE Shaw emerged as the frontrunner with the highest CTC reaching 23.5 LPA, closely trailed by XALTS presenting an attractive package of 20 LPA Whereas Still Tank provided the highest internship stipend of 50,000. It was truly awe-inspiring to witness around 196 students embarking on coveted internship journeys, while an impressive 77 students seized lucrative full-time career opportunities, with 59 individuals making unique selections.

23.5 LPA
D.E Shaw

HIGHEST
PACKAGE

PLACEMENTS

5.7 LPA

AVERAGE
PACKAGE

50
KPM

HIGHEST
STIPEND



250+
COMPANIES

10
KPM

AVERAGE
STIPEND

INTERNSHIPS

ENVISION 6.0

Report

ENVISION 6.0- Annual Internship and Job Fair of Horizon - The Placement Cell of Maitreyi College, reached new heights on March 21st, 2024, with over **166** registrations. The event featured both

In-person and online participation from students across Delhi NCR.

A total of **74** esteemed companies, including, GSC & Associates, Piramal Finance, Next IAS, Finoac, Bajaj Capital, Lenskart, Kalakrit, Softage joined the fair. Of these, **22** companies offered job positions, while **52** companies provided internship opportunities.

The fair saw impressive selection rates, **59** candidates were selected from Maitreyi College, and **13** were from other institutions.

The average CTC offered at Envision 6.0 was **₹4.5 LPA**, with the highest package reaching **₹5.6 LPA**, by **Bajaj Capital**. The average stipend for internships was **₹10,000 per month**, with **Zielhoch** offering the highest stipend of **₹15,000 per month**.

PLACEMENTS

23.5 LPA
D.E Shaw

HIGHEST
CTC

5.7 LPA

AVERAGE
CTC

INTERNSHIPS

50k

HIGHEST
STIPEND

10k

AVERAGE
STIPEND



PAST RECRUITERS

JOBS

Deloitte.

pwc

KPMG

EY

accenture

DE Shaw & Co

Crowe

BajajCapital

HCL
HCL TECHNOLOGIES

zomato

Arcesium

wtw

Nestlé

ICICI PRUDENTIAL
LIFE INSURANCE
We cover you. At every step in life.

Piramal
Capital & Housing Finance

HDFC Life
Sar'utha ke jayo!

TATA
CONSULTANCY
SERVICES
tcs

airtel

wipro

abp
न्यूज़

PREFERRED SQUARE

TresVista
Catalyzing Your Impact

ditto

uCertify

Growjunction

IntelliPaat

Tech2Globe
you authorize, we improvise!!

AGUMENTIK
CONSULTANCY PRIVATE LIMITED

unbundi

INDIA
INFRASTRUCTURE
PUBLISHING

mycaptain

AIR INDIA

PLANIFY
Startups | PreIPO | Unicorns

FINCART

INTERNSHALA

PAST RECRUITERS

INTERNSHIPS

INITIATIVES BY THE CELL

CV VETTING

The Placement cell conducted a CV Vetting drive in the college to assess students' resumes for internships, job placements and other opportunities. The cell has devised a thorough and efficient CV vetting procedure. CV Vetting serves by scrutinizing the CV of a student to acquire factual authenticity from it. The motive was to verify the validity of the CVs of the students and thus present only the precisely vetted CVs to the recruiters. We not only review the CVs, we sculpt individual stories of triumph. Our meticulous approach ensures that your strengths shine and your aspirations resonate, creating CVs that leave an indelible mark. Get ready to be noticed for all the right reasons.



ALUMNI CONNECT



Past, present, and future converge in Maitreyi's alumni network. It's not just about who you were, but who you become. Our alumni initiatives are woven threads of connection, binding us to a shared history and propelling us towards a collective destiny. One such initiative to strengthen the bond was the "PLACEMENT BOOTCAMP SERIES" in which the cell invited some of the alumni to give training sessions and mentor their juniors on a wide variety of topics.

WORKSHOPS & SEMINARS

Horizon introduced various opportunities to help students face the selection procedure confidently. This year, the cell provided skill enhancement and training sessions in collaboration with industry giants like JHU Carey Business School, RBI, Teach for India, Jio Institute and ITM Business School and many more organizations, which organized seminars/webinars to provide students with a competitive edge and a great sense of knowledge. These weren't just webinars/seminars, they were transformative experiences that provided a sneak peek into the dynamic corporate arena to the students.



OUR ACHIEVEMENTS

The Placement Cell witnessed high increase in the number of students getting placed in Prestigious and reputed companies like Deloitte, PwC, Nestle, WTW, Accenture Crowe, HCL Tech, Zomato etc. got on-board with us for the session.

The major highlights of the session were over 25 well executed sessions by Top Organisations like: PWC ,US EMBASSY, Kings college London ,Byju's and year-along events entailing Placement Bootcamp Series, Study Abroad Fair, PG Education Fair and many more.

The Annual Job and Internship Fair of Horizon, known as Envision, is one of the most awaited events of the year for all the students. The fair was an incredible event with 78 reputed companies like Bajaj Capital, Piramal Finance, Techfin etc.

The most enthralling part was witnessing over 196 students being selected for internships and 215+ students being placed at lucrative full-time job opportunities. The highest CTC bestowed for the session 2023-24 was 23.5 LPA by DE Shaw and average CTC stood at Circa 5.7 LPA

“ TESTIMONIALS ”



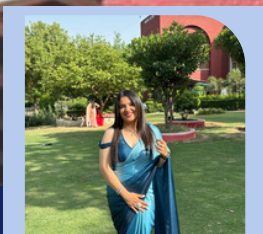
Tanvi Mittal
Bcom (Hons) Batch 2023-24
Placed at Deloitte

I am deeply grateful to the placement cell for their exceptional support and guidance throughout the recruitment process. Being placed at Deloitte is a dream come true, made possible by the team's dedication and valuable resources. Their efforts in providing workshops, mock interviews, and industry insights were instrumental in my success. Thank you for making this journey so rewarding!

Bakshish Kaur
B.Com(Hons) Batch2023-24
Placed at PwC



I am incredibly thankful to the placement cell for their unwavering support throughout my journey. From resume building to mock interviews, they helped me at every step of the way. Securing a position at PwC is a dream come true and I owe it all to their exceptional efforts. Thank you!



Hanshika khanna
Bcom (Prg) Batch 2023-24
Placed at Xalts with 20LPA CTC

Horizon, the placement cell of Maitreyi College, has undoubtedly provided immense support and guidance throughout the entire process of final placements. Securing a position as a Business Development Associate at Xalts and achieving the highest package in the batch of 2024 is truly a dream come true, made possible by the team's dedication and valuable resources.

The recruitment journey was thorough and well-organized, starting with industry insights provided by Horizon, which were crucial in building our confidence and readiness. The selection process at Xalts involved several stages, each designed to evaluate different skills and attributes. The first stage was a group discussion that assessed our communication skills, teamwork, and quick thinking. This was followed by a personal interview round, where I had the opportunity to showcase my skills, experiences, and suitability for the role. The interviewers were insightful and thorough, making it a valuable learning experience.

The final stage was an interview with the founders of Xalts. This was an incredible opportunity to engage directly with the company's leaders and gain insights into their vision and expectations. Their questions were challenging and enlightening, making this round particularly memorable.

Throughout the entire process, Horizon provided unwavering support. Their continuous encouragement, personalized feedback, and commitment to excellence were pivotal to my success. I am immensely thankful to Horizon for bringing such a wonderful opportunity my way and making this journey so rewarding. The skills and confidence I have gained through this experience will undoubtedly shape my career in the most positive way.

“ TESTIMONIALS ”



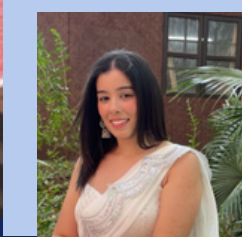
Rashi Sharma
B.Com(Hons) Batch2023-24
Placed at Crowe

From organizing insightful alumni talks to seamless placement drives, the placement cell has provided us unwavering support. I am grateful to the cell for helping me in securing a promising career opportunity at Crowe .

Suhani Goyal
B.Com(Hons) Batch2023-24
Placed at Arcesium



Placement cell's dedication and tireless efforts, from organizing various placement activities, connecting us to potential employers till the final selection into Arcesium has really played an important part in my career path.



Vanshika Dutta
B.Com(Hons) Batch2023-24
Placed at HCL Tech

The Placement Cell conducted a series of seminars that were highly insightful for making informed decisions about future my career path. Furthermore, they actively facilitated engagements with a diverse range of companies offering different career profiles, thereby, enabling other students as well to strategically step into their career aspirations. I am sincerely grateful to the placement cell for providing me with the opportunity to apply and secure a position at HCL Technologies.

ILLUSTRIOUS SELECTIONS 2023-24

pwc



Priyamvada Rajpal
B.Com(Hons.)



Khushi Gaba
B.Com(Hons.)



Bhumika Gupta
B.Com(Hons.)



Prachi Sidana
B.Com(Hons.)



Aishwarya Goel
B.Com(Hons.)



Vanshika Jain
B.Com(Hons.)



Radhikka Bajpai
B.Com(Hons.)



ISHITA SAHAY
B.Com(Hons.)



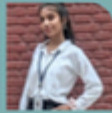
Tanisha Bisht
B.A - Hons.



Bakshish Kaur Banga
B.Com(Hons.)



Aakanksha Agarwal
B.Com(Hons.)



Geetika Sardana
B.Com(Hons.)

Deloitte.



Prakriti Kapoor
B.com(H)



Bhavya Mehta
B.com(H)



Lavanya Sharma
B.com(H)



Mayuri Jain
B.com(H)



Tanvi Singh
B.com(H)



Monil Gupta
B.com(H)



Ananya Nangia
B.com(H)



Ganya Sharma
B.com(H)



Vidhi Jain
B.com(H)



Ashlyn Dhingra
B.com(H)



Anushka Pandey
B.com(H)



Tanvi Mittal
B.com(H)



Prachi Yadav
B.com(H)



Aishna Talwar
B.com(H)



Archishaa Sharma
B.com(H)

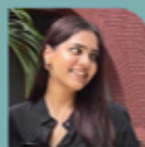
ACCENTURE



Khushi Arora
B.Com(P)



Nimeesha Patidar
Economics (H)



Pari Bansal
B.Com(H)



Vanshika Tomar
B.Com(H)



Priyamvada Rajpal
B.Com(H)



Jyoti Kumari
B.Sc Physical Science



Prachi Sidana
B.Com(H)



Aarushi Sinha
Economics (H)

Crowe



Lakshita Sharma
B.com(H)



Vidhi Goel
B.com(H)



Megha Arora
B.com(H)



Mahika Jain
B.com(H)



Riya Sehgal
B.com(H)



Prachi Sidana
B.com(H)



Aishwarya Goel
B.com(H)



Rashi Sharma
B.com(H)



Radhika Aggarwal
B.com(H)

ILLUSTRIOUS SELECTIONS 2023-24

NESTLE



siya

B.A. (Hons.) Economics
Batch 2022-23



Poornima

B.A. (Hons.) Economics
Batch 2022-23



Kusha

B.A. (Hons.) Economics
Batch 2022-23

HCL TECH



Vanshika Dutt
B.Com (H)



Priyanka Arora
B.Com (H)

The CTC offered is 20 LPA

XALTS



Hanshika Khanna
B.Com program

ZOMATO



Anushka Goel
B.Com (H)



Teesha Jain
B.Com (H)



Vedantee Raut
B.A (P)

WTW



Parminder
B.A Economics (H)

EMBARKING ON MAITREYI'S UNIQUE RECRUITMENT EXPEDITION

The Recruitment Process at Maitreyi is extremely recruiter friendly and hassle-free. Our Placement cell assists both parties in conducting a smooth and effective placement drive.



LETS CONNECT

Ready to explore top-tier talent? Reach out to HORIZON, Maitreyi's placement cell, through LinkedIn, telephone, or drop us a mail at placement@maitreyi.du.ac.in. After confirmation, The recruiters can share the detailed information about the opportunity via mail.

GUIDED COORDINATION



Enjoy a smooth process with a dedicated point of contact (POC) for seamless communication. All the coordination with respect to rounds including but not restricted to pre-placement/ Internship talk, CV shortlisting, Online tests, Group discussions, Personal interviews are facilitated by the cell in coordination with the recruiter. It helps the students to simplify the complex corporate jargon and coordinate with the companies for a smooth process.



RECRUITMENT PROCESS

POC then drafts a message containing all the necessary details, along with a link to a Google Form for registration and a detailed job description form (JD). A poster is also designed by the Graphics and Creatives department of the cell. The message along with a poster are then circulated amongst the students in their respective groups. Interested students register through the Google Form link and In case of any query, they can get in touch with the POC.

SEALING SUCCESS



Responses are shared with the company and the recruitment process is conducted in coordination with the recruiter by the cell. After the completion of the recruitment process, the final results are then shared by the placement cell to the selected students. In case required by the company, The placement cell also facilitates the communication regarding offer letters, date of joining etc. to the candidates.

MEET THE TEAM



**Mr. GinmunLal
khongsai**
(Convenor)



Dr. Aruna Grover
(Committee Member)



**Dr. Bijayani
Mishra**
(Committee Member)



Dr. Mansi Dhingra
(Committee Member)



Dr. Rinku Kumar
(Committee Member)



Mr. Monu Kumar
(Committee Member)

MEET THE TEAM



Shreya
(President)



Aditi Srivastava
(Vice President)



Diya Gakhar
(Vice President)



Radhika Sharma
(General Secretary)



Naurena
(Joint Secretary)



Moumita
(Treasurer)

Media and Marketing Department

Head: Sneha Srivastava
Co-Head: Sonam

Corporate Networking Department

Head: Parnika Saraf
Co-Head: Suhani Bhardwaj

Event Management Department

Head: Hemangi Sharma
Co-Head: Preksha Sharma

Graphics and Creative Department

Head: Vashita Vishwakarma
Co-Head: Sanya Takkar

Data and Communication Department

JOBS
Head: Annuradha
Co-Head: Deeksha

INTERNSHIPS:
Head: Nivedha
Co-Head: Shruti

Corporate and Finance Department

Head: Anushka Nagpal
Co-Head: Ritika Kukreja

Connect with us



PlacementDU



placement@maitreyi.du.ac.in



Horizon, The Placement Cell



Placement Cell of Maitreyi College



Placement Cell of Maitreyi College

